

## ECONOMIC FORECASTS

- This year we revisited economic forecasts and the outlook for 2012, as prepared by a number of leading economists at major investment institutions. The overall U.S. GDP outlook is lackluster and below trend for 2012. The inflation expectation is fairly benign. While most economists view the recent U.S. economic news for employment, manufacturing and corporate profits as a step in the right direction, the sovereign credit situation in Europe, along with an expected European recession will act as a drag on the U.S. and global economy. Global GDP is expected to be around a moderate 3.0-3.5%, supported by economic recovery in China (expected ranges: 8.0 – 9.0% GDP growth) and other emerging countries. The largest risk to these forecasts is the situation in Europe; most economists assume the sovereign and bank debt situation is stabilized, however, should the credit crisis become volatile again, forecasts are subject to revision to the downside.

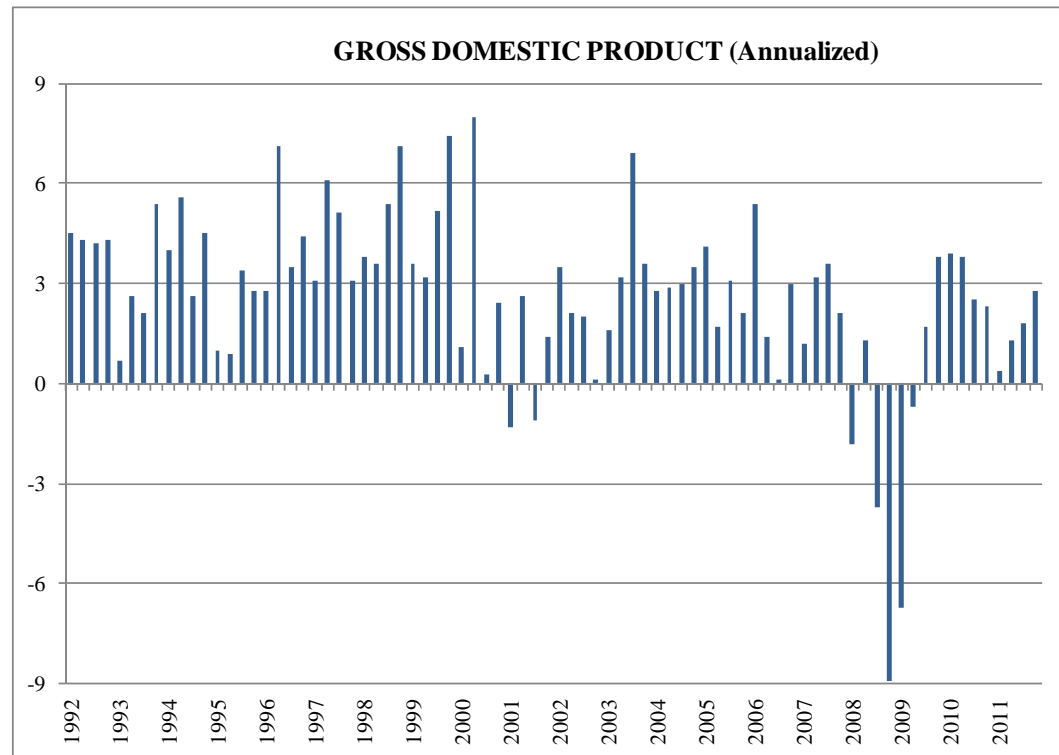
2012 Forecast						
	Global GDP (%)	US GDP (%)	US CPI Inflation (%)	US Unemployment (%)	Targeted Fed Funds Rate (%)	Views on Markets
<b>Deutsche Bank</b>	3.5	2.3	3.2	8.5	Unchanged at 0-0.25%	<ul style="list-style-type: none"> <li>U.S. GDP forecast is supported from stronger business/consumer spending, export growth to emerging economies, and politically-driven stimulus programs. Growth is offset by budget cuts, and expected tax increases from anticipated lapse in payroll tax cuts.</li> <li>Business and consumer confidence, key drivers of GDP, will fluctuate based on political and international uncertainty, and will move lower if European credit crisis deepens. Still depressing housing and weak employment picture are additional deterrents to consumer confidence and growth.</li> </ul>
<b>Goldman Sachs</b>	3.3	2.1	1.9	8.5	Unchanged	<ul style="list-style-type: none"> <li>Expects U.S. GDP growth in the beginning half of year to be supported based on expectations of full-year extensions of payroll tax cuts. Recent unemployment and housing indicators, as well as a temporary boost from inventory building and unseasonably warm weather also point to a better economic picture in the beginning of 2012.</li> <li>Growth decelerates later in the year as additional fiscal consolidation occurs (including state and local government) and increased impact of European credit crisis.</li> <li>European recession is forecasted to deepen in first quarter of 2012, but will have limited impact on U.S. economy if major policy changes occur within the EMU such as a move to a full fiscal union, or a larger commitment by the ECB to support sovereign debt. Economic forecasts would change if situation were to become unstable.</li> </ul>
<b>JP Morgan Chase</b>	2.0	1.9	1.2	8.1	Unchanged	<ul style="list-style-type: none"> <li>Beginning half of 2012 will see slower global growth based on forecasted European recession and slowing growth in China.</li> <li>Biggest deterrents to growth and risks in 2012 come from a lack of resolution to European crisis, a slump in Chinese real estate, and continued political discord and a lack of policy initiatives in the US.</li> </ul>
<b>Morgan Stanley</b>	3.5	2.2	2.1	8.9	Unchanged	<ul style="list-style-type: none"> <li>Global developed markets will be driven by European recession, failure of EMU policy makers to develop a credible solution to the credit crisis, and fiscal tightening in the U.S.</li> <li>Emerging markets growth will be lackluster, but China will avoid a hard landing and growth will pick up in second half of 2012. Rate cuts are possible in some emerging markets.</li> <li>Political uncertainty ahead of the 2012 election in the U.S. will temper business and consumer confidence.</li> </ul>

## ECONOMIC FORECASTS

	Global GDP (%)	US GDP (%)	US CPI Inflation (%)	US Unemployment (%)	Targeted Fed Funds Rate (%)	Views on Markets
<b>PIMCO</b>	1.0-1.5	0-1.0	-	-	Unchanged	<ul style="list-style-type: none"> <li>Forecasting continued global deleveraging on the back of European sovereign and banking credit crisis. Resolution to European credit crisis will not occur until fiscal and financial imbalances between EU members are addressed.</li> <li>U.S. public sector debt will be difficult to manage, given impact from slower growth expected in Europe and China.</li> <li>Increased financial regulation will also impede U.S. economic growth</li> </ul>
<b>Wells Fargo</b>	3.2	2.0	2.0	9.0	Unchanged	<ul style="list-style-type: none"> <li>US growth is capped by limited recovery in the housing market, continued consumer deleveraging, a lack of income/wage growth, and continued fiscal tightening at federal, state and local levels.</li> <li>Global growth in the second half of year will be supported by easing of Chinese inflation and possible interest rate cuts.</li> </ul>
<b>Federal Reserve Bank</b>	-	2.2-2.7	1.4-1.8	8.2-8.5	Unchanged	<ul style="list-style-type: none"> <li>Fed released a statement on 1/25/2012 noting economic projections and a view that the U.S. economy is expanding moderately, but concerns about business investment, unemployment, and strains in global financial markets led them to expect they will keep rates low at least through 2014.</li> <li>Note: Federal Reserve Bank inflation is based on Personal Consumption Expenditures indicator.</li> </ul>
<b>Consensus</b>	-	2.4	2.25	8.2	Unchanged	
(source: WSJ, Jan. 2012)						

## ECONOMIC REVIEW

% Change From Preceding Period <i>Seasonally Adjusted Annual Rates</i>	2011			
	Q1	Q2	Q3	Q4
<b>GDP</b>	0.4	1.3	1.8	2.8
<b>PCE</b>	2.1	0.7	1.7	2.0
Durable Goods	11.7	(5.3)	5.7	14.8
Nondurable Goods	1.6	0.2	(0.5)	1.7
Services	0.8	1.9	1.9	0.2
<b>GPDI</b>	3.8	6.4	1.3	20.0
Fixed Investment	1.2	9.2	13.0	3.3
Nonresidential	2.1	10.3	15.7	1.7
Structures	(14.3)	22.6	14.4	(7.2)
Equip & software	8.7	6.2	16.2	5.2
Residential	(2.4)	4.2	1.3	10.9
<b>Exports</b>	7.9	3.8	4.7	4.7
Goods	10.6	2.5	5.0	5.0
Services	1.7	6.2	4.0	3.9
<b>Imports</b>	8.3	1.4	1.2	4.4
Goods	9.5	1.6	0.5	4.1
Services	2.2	0.4	4.8	5.6
<b>Government</b>	(5.9)	(0.9)	(0.1)	(4.6)
Federal	(9.4)	1.9	2.1	(7.3)
State and Local	(3.4)	(2.8)	(1.6)	(2.6)



- The full year 2011 was a year that will surely be remembered for its extreme volatility as domestic political concerns, U.S. double-dip recession fears, European sovereign risks, and concerns about slowing growth in China and India buffeted markets on a seemingly daily basis. While the year began on a strong note with U.S. stocks up early along with strength in commodities and emerging market currencies this bright outlook soon faded from memory as a string of unending negative events weighed on the global economy. From the spike in oil prices due to the unrest in the Middle East, to the after-effects of the Japanese earthquake, to the S&P downgrade of U.S. long-term debt, the markets remained headline driven throughout the majority of the year overlooking the key theme of strong corporate fundamentals.
- The first estimate for fourth quarter GDP came in at 2.8%, which was slightly below expectations. Components of the GDP did not present an overly optimistic outlook for the domestic economy. Factors relating to consumer spending and business investment were down, and inventory building was up.
- In looking forward to 2012, a key question that remains is whether the favorable backdrop of solid corporate fundamentals, including strong profits, rising dividends and increased buybacks combined with an improving unemployment picture and brighter macroeconomic data points will lead to a less volatile year to come or will continued concerns over European sovereign risk along with an uncertain domestic political environment lead to a repeat of 2011.

# ECONOMIC REVIEW

### US UNEMPLOYMENT (Seasonally Adjusted)



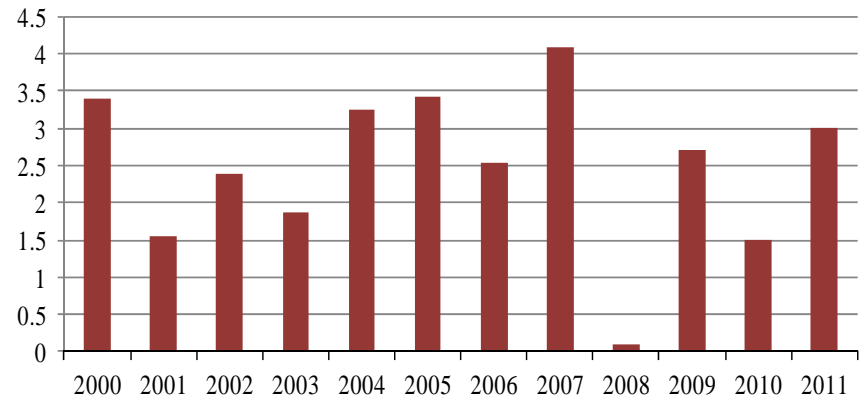
- As the year drew to a close, bright spots emerged in the economy in the form of improved unemployment trends, increased consumer confidence and a pick up in construction activity.
- Although mortgage rates remained near their all time lows throughout the year, the housing market continued to stagnate for much of 2011. Slight glimmers of hope finally appeared late in the year, supported by a pick up in demand in residential markets and signs of strength in commercial real estate.

### 30-YEAR FIXED MORTGAGE RATES

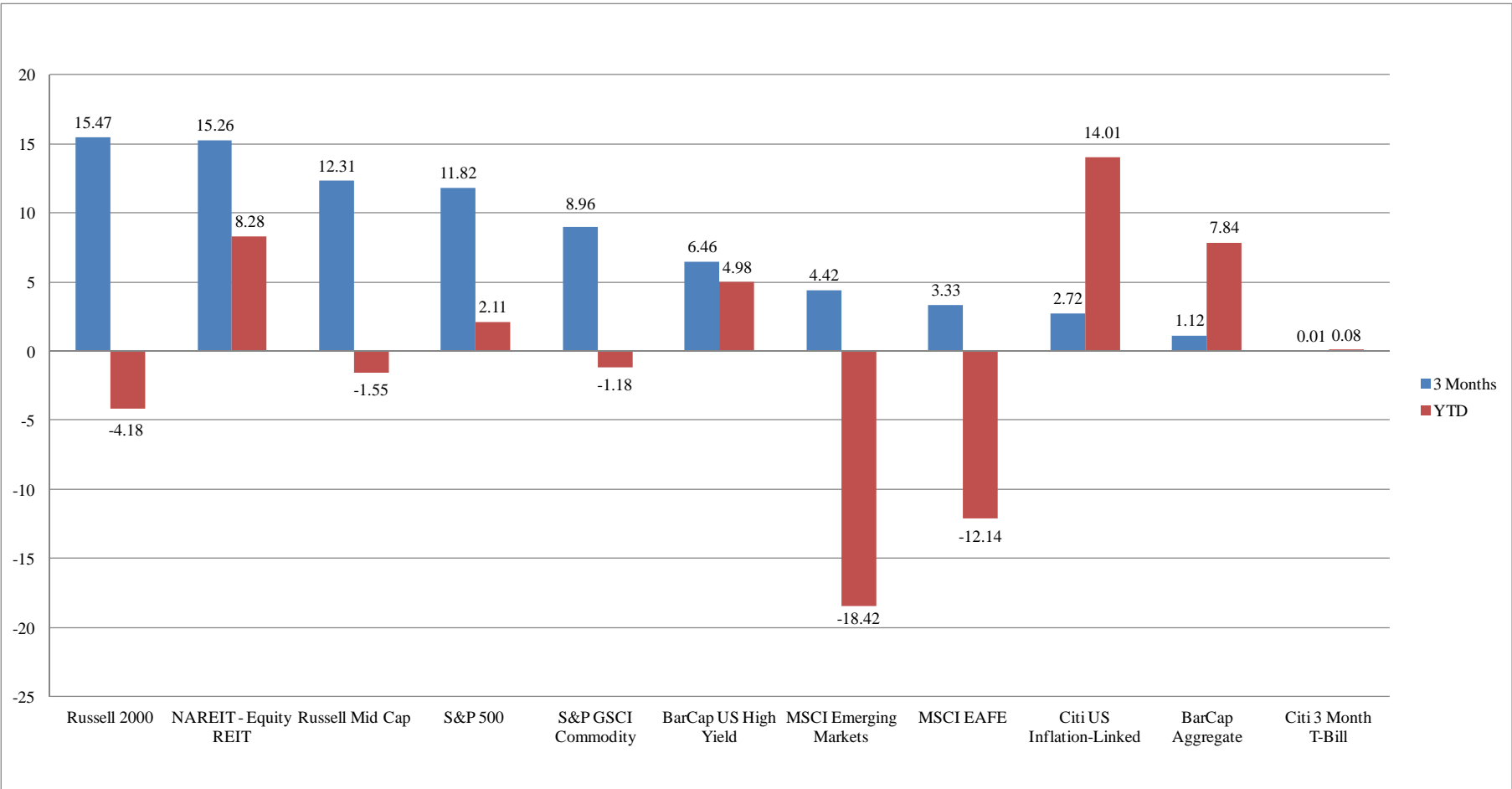
Source: Freddie Mac



### U.S. INFLATION



# ASSET CLASS PERFORMANCE



# DOMESTIC EQUITY

## Trailing Performance as of: December 2011

(As exhibited by the Russell 1000, MidCap and 2000 stylized indices)

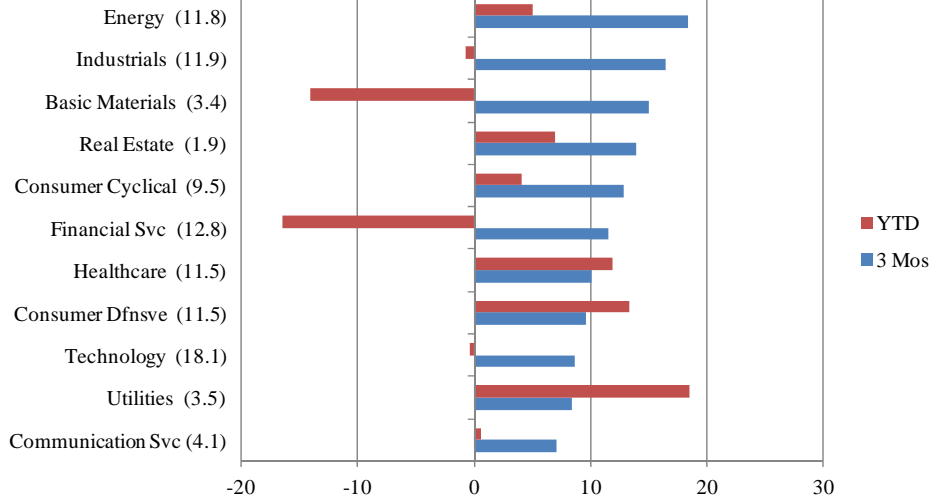
Fourth Quarter 2011				2011				
Large	13.11	11.84	10.61	Large	0.39	1.50	2.64	
	13.37	12.31	11.24		Mid	-1.38	-1.55	-1.65
	15.97	15.47	14.99			Small	-5.50	-4.18
Value	Blend	Growth	Value	Blend			Growth	

Top 3 performers

Bottom 3 performers

- The U.S. equity markets posted strong double digit gains in the fourth quarter of 2011, led by Energy (18.43%), Industrials (16.41%) and Materials (15.03%). The S&P 500 Index produced an 11.8% return. Small cap stocks, as represented by the Russell 2000 Value Index (16%), led the market.
- However, 2011 was a volatile year by historical standards as macro-economic headlines both domestic and abroad have dominated fundamental factors driving market returns. The domestic stock markets ended the year flat. The S&P 500 Index returned 2.1% for the year as dividends accounted for the majority of the positive return.
- Fears of a double dip recession and volatility led investors to prefer defensive sectors, such as Utilities (18.46%), Consumer Defensive (13.39%) and Healthcare (11.9%). Conversely, Financial Services had a tough year losing 16.51% on concerns about the Eurozone debt problems. Basic Materials (-14.12%) was the second worst performing sector.
- From a style perspective, Growth outperformed Value during the year with the difference coming almost entirely from the Financial sector. The Russell 1000 Growth Index maintains about 4% in the sector while the Russell 1000 Value Index has about 25%.
- In terms of market cap, large companies outperformed smaller more aggressive stocks as the former rose on strong dividend yields, stable business models and attractive valuations. The Russell 2000 Value Index (-5.5%) was the worst performing among the style indices for the year.

## S&P 500 Index Sector Performance (with weights)



## INTERNATIONAL EQUITY

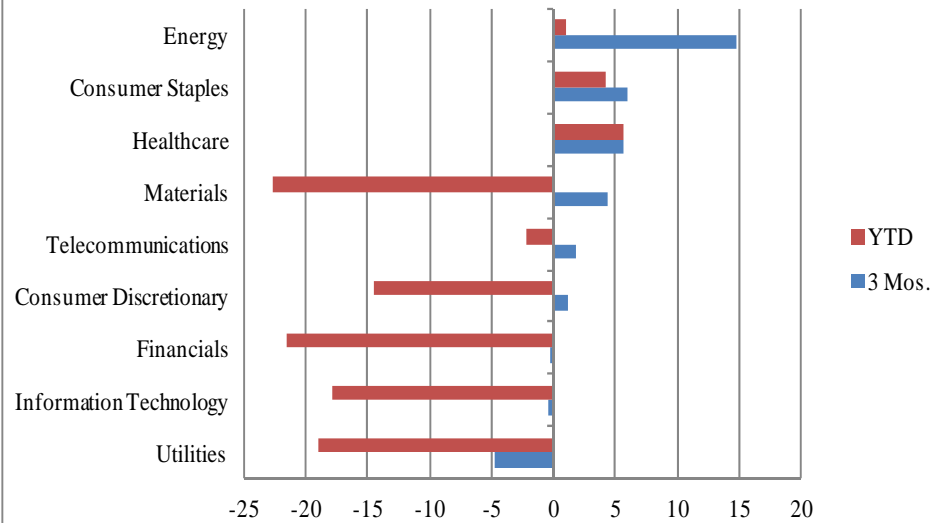
**Style Performance as of: December 2011**

Fourth Quarter 2011				2011			
EAFE	2.74	3.33	3.92	EAFE	-12.17	-12.14	-12.11
EAFE Small	-1.61	-0.56	0.50	EAFE Small	-17.63	-15.94	-14.23
EM	4.28	4.42	4.57	EM	-17.86	-18.42	-18.97
	Value	Blend	Growth		Value	Blend	Growth

Top 3 performers

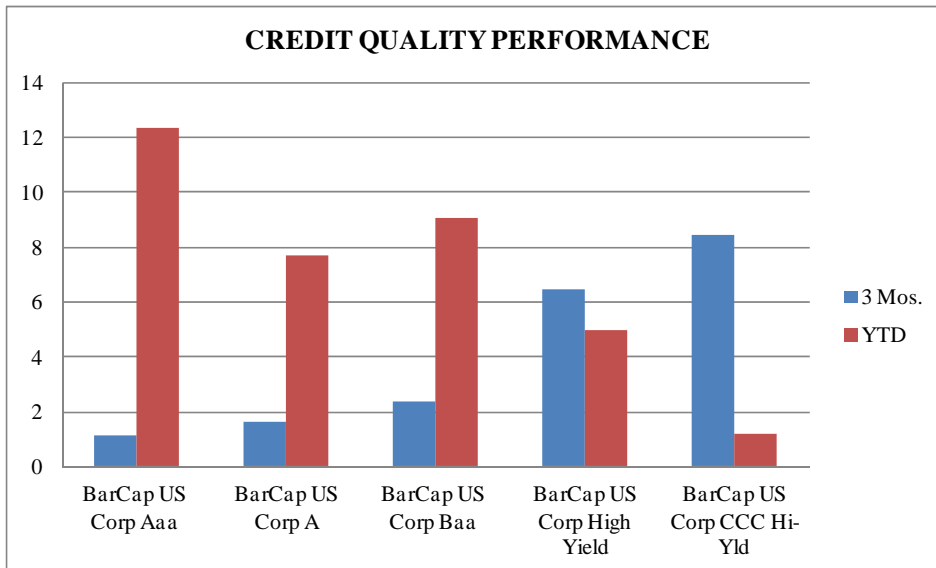
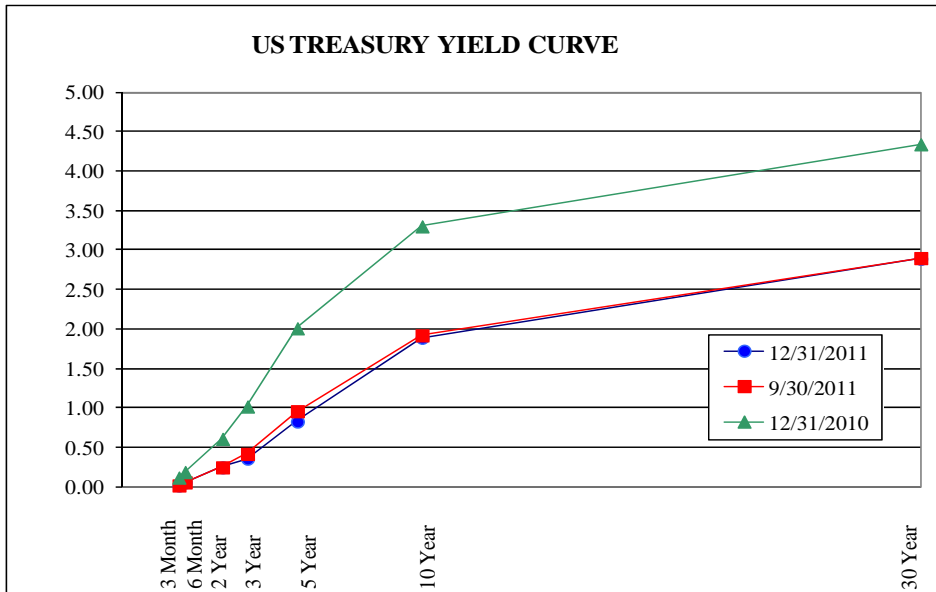
Bottom 3 performers

**MSCI EAFE SECTOR PERFORMANCE**



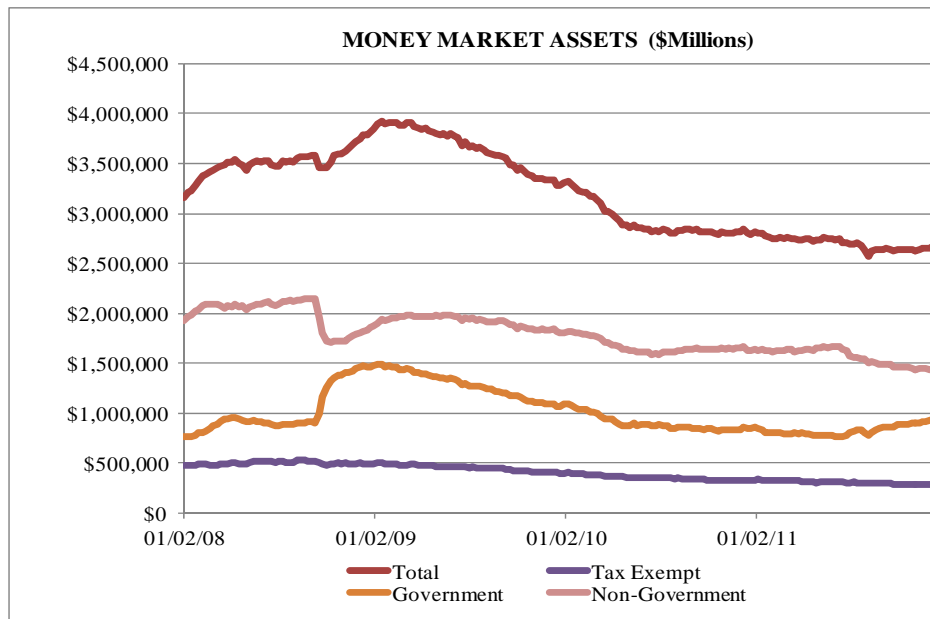
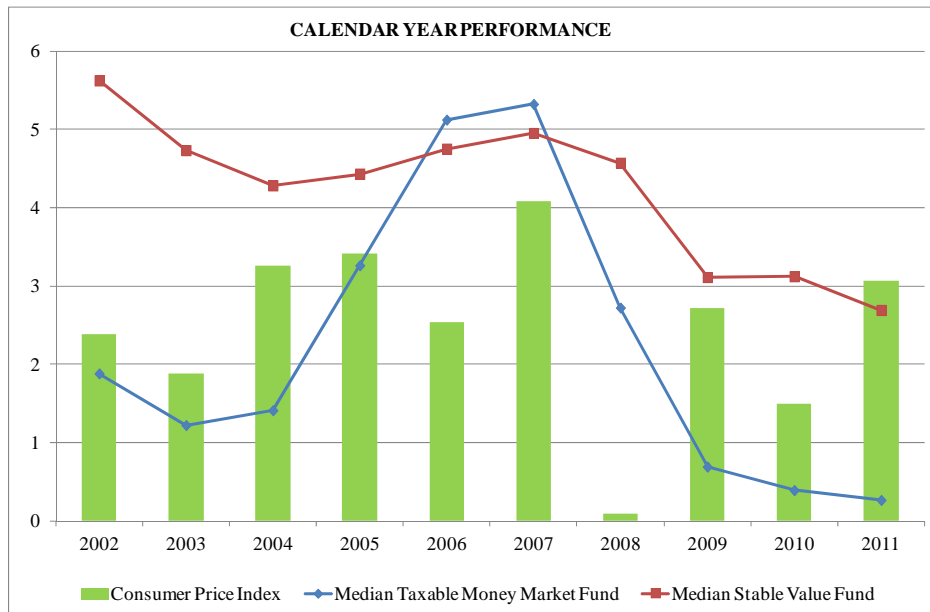
- International equity markets remained volatile during the fourth quarter. Overall, the major market indices posted small gains during the fourth quarter as markets posted a small recovery from the turmoil experienced earlier in the year due to the European debt crisis. Fiscal uncertainty continued to prevail in Europe as political wrangling continued to dominate the news. Talks have also turned to the sustainability of the euro, and there seems to be no clear answers surrounding the topic. Meanwhile, in Asia, individual markets were somewhat insulated from Europe's problems, although the potential for slowing growth in China continued to be a recurring theme both for the fourth quarter and for much of the year. The U.S. dollar showed strength against major European currencies. The dollar's appreciation had a small negative impact on developed market equity returns on a U.S. dollar basis.
- Individual countries in Europe posted varying performance during the fourth quarter, with most showing small gains or losses. There were exceptions, however, with Greece losing another -27.5% while teetering on the brink of default. This brings the total loss for the year to a staggering -62.77%. On the positive side, Irish markets gained 22.37% for the quarter, and gained 13.71% for the year. Ireland was the only market in Europe to post gains for the full-year. Despite Ireland's lingering debt problems, this outperformance was driven by a few stock specific factors, including the rise of healthcare company Elan on speculation that it could be a takeover target and solid results from consumer products company Kerry Group.
- Within the Asian markets, Japan and Singapore saw declines in their markets in the fourth quarter, while Hong Kong's market gained 6.29%. Nonetheless, each of those major markets also had losses for the year as well. Even though various markets had posted gains at times during the last twelve months, those gains were fleeting as these markets proved not to be insulated from the crisis that continues to be felt around the world.
- The MSCI Emerging Markets Index (4.42%) slightly outperformed the MSCI EAFE Index (3.33%) for the fourth quarter of 2011. Most emerging markets saw gains for the quarter, although India was a negative outlier with its -14.25% drop over the last three months of the year. Performance for emerging markets for the full year was not as rosy, as the index dropped -18.42% overall. Again, India was the worst performing market for the year with a decline exceeding -37%. China posted gains for the quarter but losses for the year, as both China and India have taken steps such as raising interest rates during the year to attempt to combat inflation. Other laggards included emerging economies in Europe, such as Hungary and Poland, which posted losses also exceeding -30%.

## FIXED INCOME



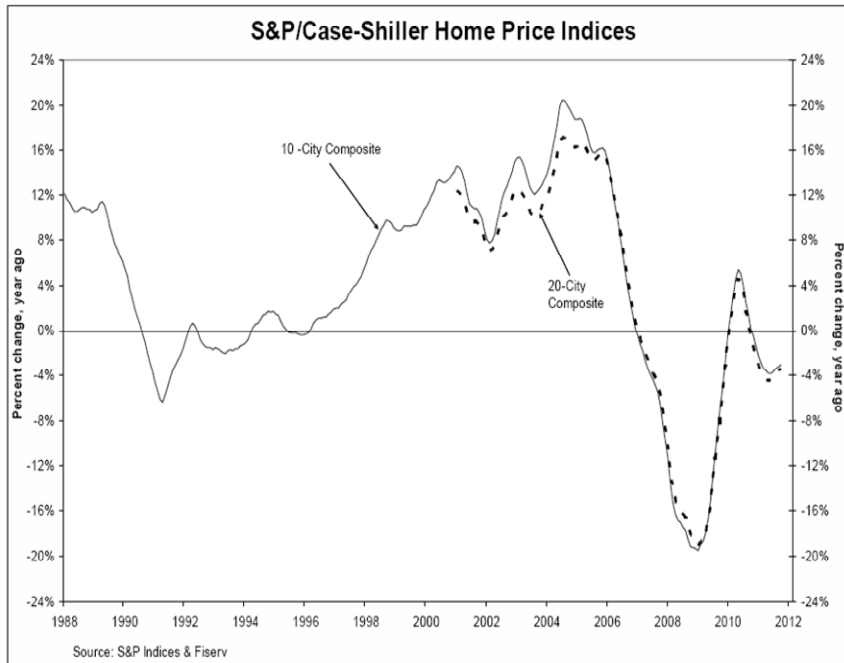
- The broad fixed income market, as measured by the Barclays Capital US Aggregate Index, posted a total return of 1.12% in the fourth quarter of 2011. Global fixed income markets continued to experience substantial volatility during the quarter as the European sovereign debt crisis carried on. The crisis, however, aided US-dollar assets and put downward pressure on US yields, as investors viewed the US as a safe haven. Against this backdrop, and steadily improving US economic data, the demand for riskier assets improved. High yield was the star performer of the quarter, while higher quality assets such as ABS and MBS lagged.
- US Treasury rates were range bound in the fourth quarter. Improving economic data drove Treasury yields higher at the beginning of Q4. Continuous Fed asset purchases and solid demand for high quality, USD-denominated assets given concerns over Euro- sovereign debt, however, eventually brought Treasury yields back down towards third quarter lows with ten-year notes trading around 2% for the last two months of the year. TIPS outperformed nominal Treasuries amid moderate growth prospects and increased inflation expectations. Ten-year breakevens (a measure of market expectations for future inflation) increased by 20 bps during the quarter.
- Investment grade credit continued to experience volatility, driven by the European debt situation and fears over global growth, hindering any significant fourth quarter returns. Investment grade corporate bond spreads narrowed by only 9 bps to 234 bps at year end. Financials underperformed given their exposure to sovereign Europe. Lower quality investment grade credit outperformed as investors sought additional yield.
- The high yield market rebounded during the fourth quarter. The Barclays Capital US High Yield Index returned 6.46%, earning 569 basis points over duration adjusted Treasuries. Solid corporate earnings despite the recent slowdown in global growth, combined with a consensus view of slow growth and no recession in the US, boosted high yield credit. High-yield spreads over similar maturity US Treasuries tightened 84 bps to 724 bps.
- The securitized sector experienced a solid fourth quarter, with 43 bps of excess return. CMBS was a top performer in the fixed income spread sectors, earning 246 bps over duration adjusted Treasuries. Firming industry fundamentals and supportive technicals aided the sub sector despite the European debt crisis. Lower rated tranches substantially outperformed AAA rated-tranches as liquidity returned to the market. Agency MBS rebounded in the quarter, aided by increasing Fed support. The sub sector beat Treasuries by 24 bps. ABS lagged duration equivalent Treasuries by 28 bps in the face of headwinds in the global economy, despite strong demand and solid fundamentals.

## STABLE VALUE & MONEY MARKET



- Products continued to face challenges, much like over the past year. With interest rates at historic lows and limited wrap capacity offered by different wrap providers the Schwab Stable Value team made the decision to end their stable value product that contained over \$8 billion. Much of that money now needs to find a home and is placing further pressure on the stable value industry. Most stable value pooled providers are under the same constraint, low interest rates and limited wrap capacities; as a result, other stable value providers are offering their product on a limited basis or have closed their funds to new investments. Many stable value products had sought out secure investments such as government and AAA securities during the credit crisis and as a result of this, coupled with 2-3 year plus durations in a declining interest rate environment, many stable value products have a market to book value that exceeds 100%.
- The crisis in Europe has been at the top of the newspaper headlines. Money market fund managers have been managing headline risk by avoiding issuers who are in the news. Libor spreads over domestic money market securities maintained a premium over the year, making Euro paper more attractive. However, the ongoing European credit crisis has led to more risk aversion that has caused investors to limit holdings even to top rated banks in countries such as the U.K, the Netherlands, Scandinavia, Canada and Australia. Amid all of the uncertainty, the focus continued to be on high credit quality issuers that were not in the negative spotlight.
- Within the regulatory environment, the Dodd Frank bill was supposed to be decided on in November; however, this has been tabled till 2012. The Dodd Frank bill puts pressure on wrap providers within the stable value industry because it would label insurance wrap agreements as swaps. If wrap agreements received the same treatment as swaps, insurance providers would have to post substantially more cash as collateral to provide wrap insurance. This would greatly discourage participation within this space.
- Total money market mutual fund assets finished the fourth quarter of 2011 at approximately \$2.7 trillion and had over \$60 billion in net cash inflows over the quarter. Most of the cash flow movement occurred in December and was directed towards government money market funds. Money market mutual fund assets remain substantially less than the peak of \$3.9 trillion during the first quarter of 2009, according to the Investment Company Institute. The need for higher yield is driving investors to longer dated holdings, especially in light of anticipated rate decreases ahead of “Operation Twist”.
- Low interest rates have held back yields on money market funds and led to outflows, forcing some fund companies to waive all or a portion of their fees since mid 2009 in order to provide a positive yield. Managers are unable to obtain significant yield by reaching further out on the yield curve and as a result have focused on liquidity. The outlook moving forward for higher interest rates remains dim as the Fed has now a commitment to holding the benchmark interest rates within the 0% to 0.25% range until at least mid 2013.

# REAL ASSETS

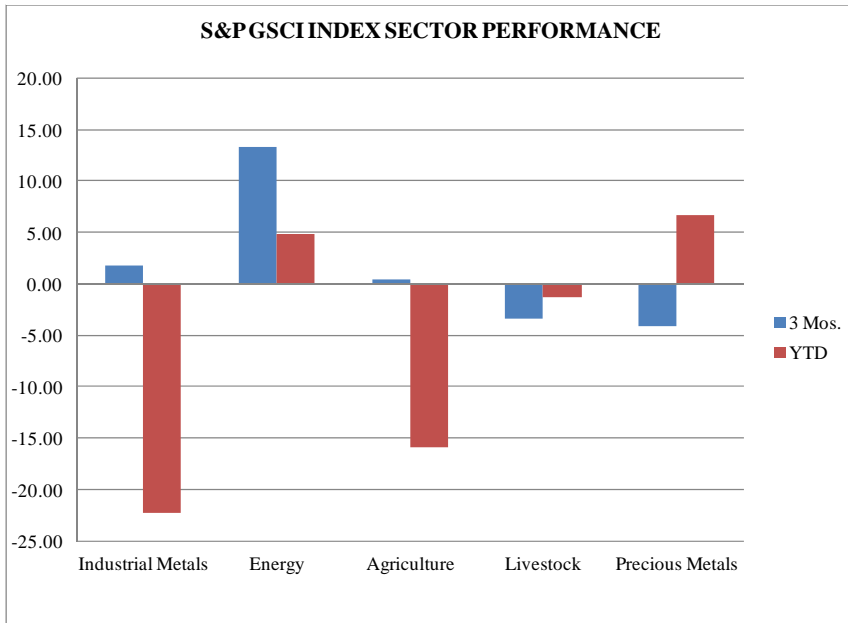


## Real Estate

- Residential real estate markets continued to stagnate throughout the course of 2011, even as mortgage rates headed towards some of the lowest levels ever recorded. Prices continued to tumble in many markets, although demand showed some positive glimmers. According to data released in December 2011, new home sales rose to a seven month high in November while existing home sales reached a 10-month peak at the same time, rising to 4.42 million units. This was a 12.2% increase as compared to the prior year.
- The housing problem continued to be widespread, as both the 10- and 20-city Case-Shiller Indices showed declines of around 1% in October 2011, and just over 3% declines for the full year ended in October. Problems continued to be widespread geographically, as Detroit and Washington, D.C. were the only two cities in the 20-City Index that showed annual gains of 2.5% and 1.3%, respectively.
- In contrast, commercial real estate continued to show some signs of strength, as commercial loans showed an increase during the third quarter of 2011, according to CB Richard Ellis. Particular pockets of strength were those loans on hotels, retail space and office buildings. Multi-family dwelling and office buildings showed less strength overall.

## Commodities

- The volatility that existed throughout much of 2011 was also evident in commodities with many commodity prices soaring early in 2011 only to be sent tumbling from their highs later in the year as continued concerns surrounding the European sovereign-debt crisis, concerns over China's ability to manage slower growth and fears about the future of the American recovery weighed on prices.
- This roller-coaster ride of volatility saw gold prices skyrocket to just below \$1900 per troy ounce in August before pulling back on profit taking later in the year. Crude oil prices soared early in the year on an overall tight supply/demand forecast and periods of unrest in Libya and the Middle East only to retreat mid-year on concerns that the demand for energy was slowing in both developed and developing markets.
- An impressive theme evident throughout this volatility was the difference between the strength in energy and gold prices and the weakness in other commodities throughout 2011. This dichotomy, as well as the overall volatility experienced throughout 2011, is best evidenced in the return of the Dow Jones UBS Commodity Index, a diversified index tracking nineteen overall commodities, which logged a 13% decline for the year.
- For the fourth quarter, the S&P GSCI index returned 8.9% coinciding with a .35% gain for the Dow Jones UBS Commodity Index and an 11.8% increase in the S&P 500. Within the S&P GSCI Index, the energy sector was the best performing sector for the quarter, increasing 13.4% on renewed tightness in the global supply/demand picture for crude as inventories declined during the quarter. Precious metals was the worst performing sector for the quarter, posting a loss of 4.1% driven by a significant decline in silver as well as profit taking in gold.



## MARKET DATA

Data as of: 12/31/11

### DOMESTIC EQUITY

Index	3 Mos.	YTD	1 Year	3 Years	5 Years	10 Years
Dow Jones Industrial Average	12.78	8.38	8.38	14.89	2.37	4.57
Russell 1000	11.84	1.50	1.50	14.81	-0.02	3.34
Russell 1000 Growth	10.61	2.64	2.64	18.02	2.50	2.60
Russell 1000 Value	13.11	0.39	0.39	11.55	-2.64	3.89
Russell Mid Cap	12.31	-1.55	-1.55	20.17	1.41	6.99
Russell Mid Cap Growth	11.24	-1.65	-1.65	22.06	2.44	5.29
Russell Mid Cap Value	13.37	-1.38	-1.38	18.19	0.04	7.67
Russell 2000	15.47	-4.18	-4.18	15.63	0.15	5.62
Russell 2000 Growth	14.99	-2.91	-2.91	19.00	2.09	4.48
Russell 2000 Value	15.97	-5.50	-5.50	12.36	-1.87	6.40
S&P 500	11.82	2.11	2.11	14.11	-0.25	2.92
Wilshire 5000 Total Market	11.97	0.52	0.52	15.24	0.28	3.90

### INTERNATIONAL EQUITY (\$)

Index	3 Mos.	YTD	1 Year	3 Years	5 Years	10 Years
MSCI AC World	7.18	-7.35	-7.35	12.01	-1.93	4.24
MSCI AC World Ex US	3.72	-13.71	-13.71	10.70	-2.92	6.31
MSCI EAFE	3.33	-12.14	-12.14	7.65	-4.72	4.67
MSCI EAFE Growth	3.92	-12.11	-12.11	8.47	-3.16	4.27
MSCI EAFE Value	2.74	-12.17	-12.17	6.77	-6.33	4.98
MSCI EAFE Small Cap	-0.56	-15.94	-15.94	14.62	-4.14	9.01
MSCI Emerging Markets	4.42	-18.42	-18.42	20.07	2.40	13.86
MSCI Europe	5.39	-11.06	-11.06	7.86	-5.20	4.35
MSCI Europe Ex UK	3.40	-15.26	-15.26	4.50	-6.23	4.14
MSCI Pacific Free	-0.30	-13.74	-13.74	7.49	-3.63	5.51
MSCI Pacific Free Ex Japan	6.00	-12.79	-12.79	20.78	2.66	11.62
MSCI EM Latin America	8.72	-19.35	-19.35	23.51	6.61	18.68
MSCI EM Europe	0.45	-23.65	-23.65	18.21	-7.27	12.92
MSCI EM Asia	3.26	-17.44	-17.44	19.48	2.51	12.07
MSCI BRIC	4.37	-22.85	-22.85	17.75	1.04	16.57

## MARKET DATA

Data as of: 12/31/11

### FIXED INCOME

Index	3 Mos.	YTD	1 Year	3 Years	5 Years	10 Years
Citigroup US 3-Month T-Bill	0.01	0.08	0.08	0.12	1.36	1.85
BarCap Aggregate	1.12	7.84	7.84	6.77	6.50	5.78
BofA ML 1-3 Year Treasury	0.19	1.55	1.55	1.56	3.69	3.25
Citi US Inflation-Linked	2.72	14.01	14.01	10.15	8.07	7.62
BarCap Mortgage	0.88	6.23	6.23	5.83	6.54	5.69
BarCap US Credit	1.70	8.35	8.35	10.90	6.80	6.35
BarCap Intermediate Govt/Credit	0.84	5.80	5.80	5.65	5.88	5.20
BarCap Long Govt/Credit	2.57	22.49	22.49	11.20	9.71	8.54
BarCap Municipal	2.12	10.70	10.70	8.57	5.22	5.38
BarCap ABS	0.23	5.14	5.14	11.55	4.37	4.41
BarCap US High Yield	6.46	4.98	4.98	24.12	7.54	8.85
BarCap US Corp Aaa	1.12	12.33	12.33	5.87	5.96	5.80
BarCap US Corp A	1.63	7.68	7.68	10.58	5.89	5.80
BarCap US Corp Baa	2.40	9.05	9.05	15.67	7.91	7.03
BarCap US Corp High Yield	6.46	4.98	4.98	24.12	7.54	8.85
BarCap US Corp CCC High Yield	8.42	1.18	1.18	30.96	4.53	9.27

### STABLE VALUE & MONEY MARKET

Index	3 Mos.	YTD	1 Year	3 Years	5 Years	10 Years
Median Taxable Money Market Fund	0.06	0.27	0.27	0.46	1.88	2.22
Median Stable Value Fund	0.63	2.69	2.69	2.97	3.68	4.22
Consumer Price Index	-0.44	3.07	3.07	2.43	2.28	2.49

### REAL ASSETS

Index	3 Mos.	YTD	1 Year	3 Years	5 Years	10 Years
NAREIT - Equity REIT	15.26	8.28	8.28	21.04	-1.42	10.20
DJ UBS Commodity	0.35	-13.32	-13.32	6.39	-2.07	6.63
S&P GSCI Commodity	8.96	-1.18	-1.18	6.93	-2.79	5.64

Barclay's Aggregate	
Index Composition	%
US Treasury	27.65
US Agency	8.96
<b>Total Government</b>	<b>36.61</b>
Industrial	9.94
Utility	2.16
Finance	6.71
Non-Corporate	4.25
<b>Total Credit</b>	<b>23.06</b>
GNMA	5.63
FNMA	17.54
FHLMC	11.87
<b>Total MBS</b>	<b>35.04</b>
Credit Card	0.23
Auto	0.06
Home	0.00
Utility	0.07
Manufactured Housing	0.00
<b>Total ABS</b>	<b>0.36</b>
<b>CMBS</b>	<b>3.19</b>
<b>Hybrid Arm</b>	<b>1.74</b>